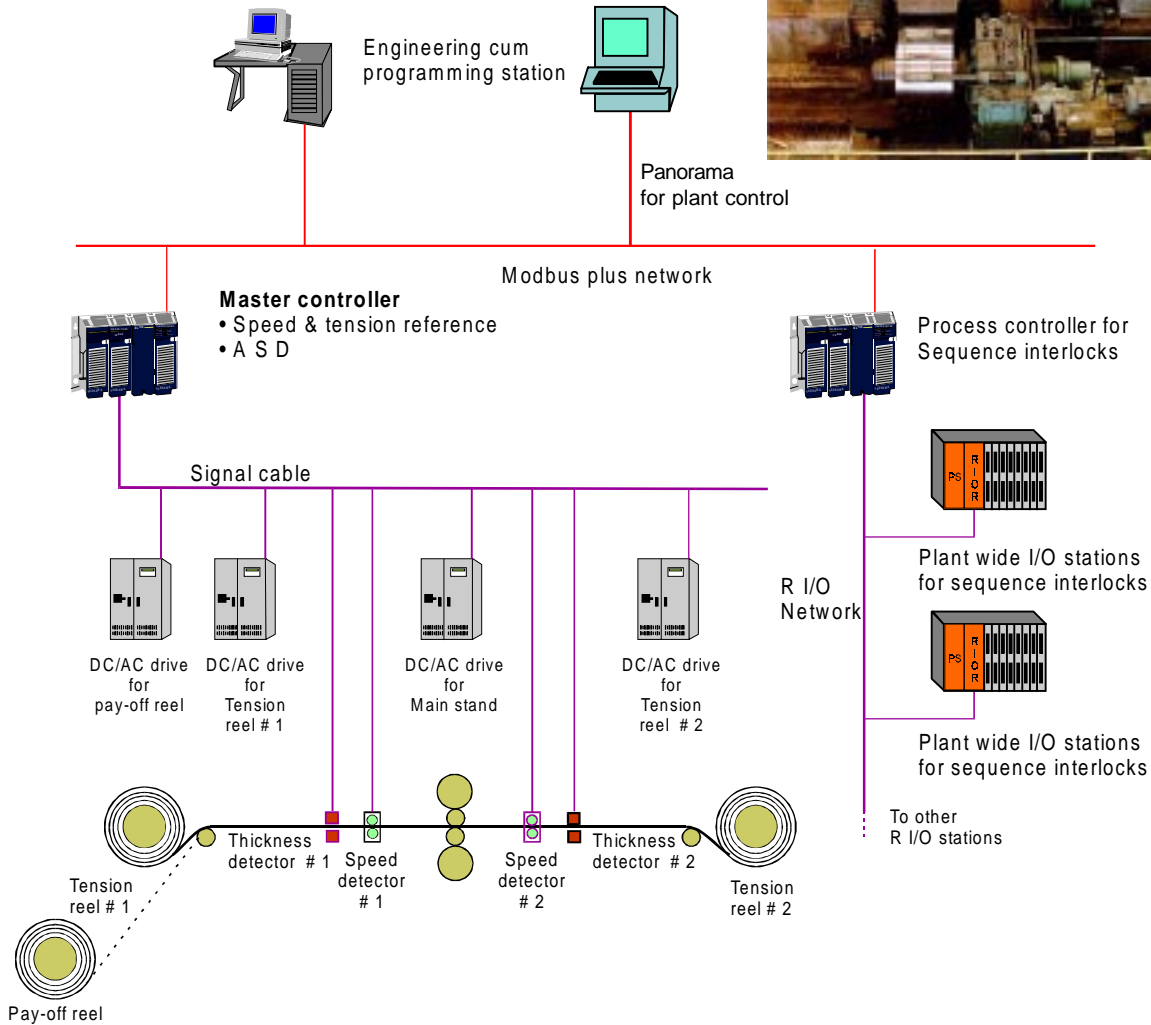
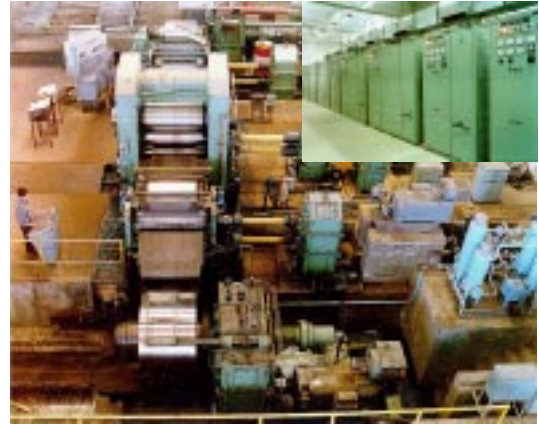


# Cold Rolling Mill Automation



*The CRM automation is the testimony for the L&T's comprehensive experience and process know-how.*

*A typical CRM automation scheme uses process controllers, high performance AC/DC drives and 'Panorama' operator station - Integrated across Modbus plus network.*

The result :

- ◆ **Digital speed & tension reference**
- ◆ **Auto slow down control (ASD)**
- ◆ **On-line rolling data logging for easy maintenance & trouble shooting**
- ◆ **Easy installation and commissioning through use of Modbus plus network**